

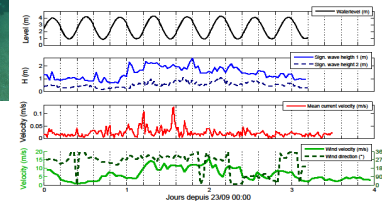
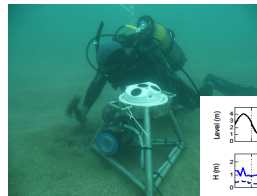
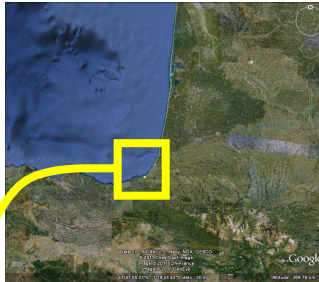


Modelling the effect of waves on a river plume in the bay of Saint Jean de Luz - Ciboure

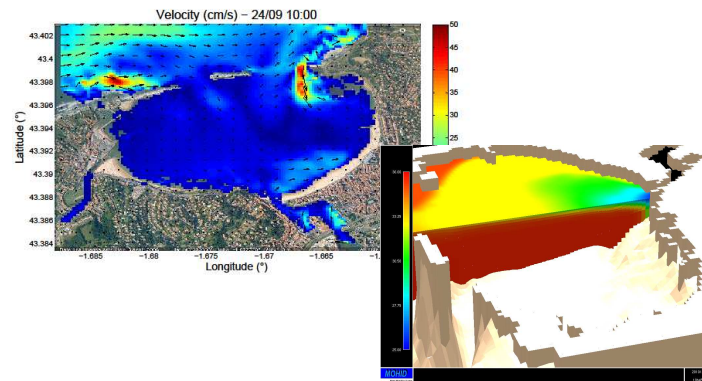


Matthias Delpey^{a,b}, Fabrice Ardhuin^b, Pantxika Otheguy^a, Aymeric Jouon^a

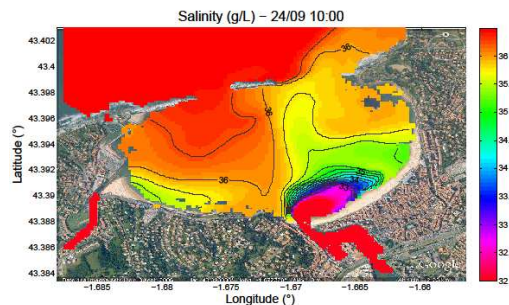
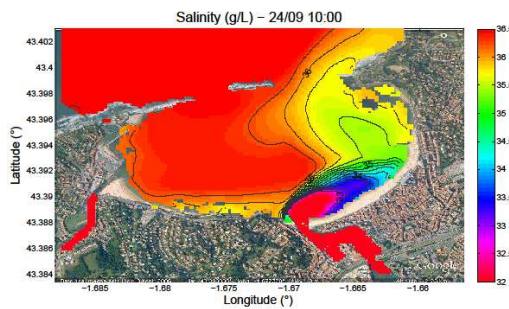
a : Rivages Pro Tech, Lyonnaise des Eaux, Bidart, France. b : Laboratoire d'Océanographie Spatiale, Ifremer, Brest, France. Contact: m.delpey@gmail.com



Field experiments



3D wave-current modelling



Effect of waves during an event of sept. 2010