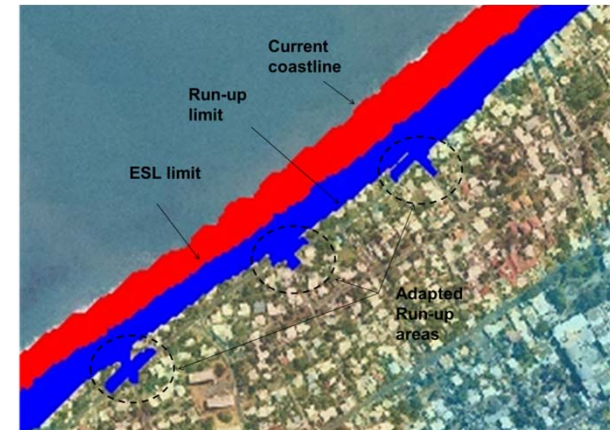


# Extreme storm events and coastal inundation management in tropical island environment : *A semi-quantitative method for hazard assessment on Reunion Island coasts*

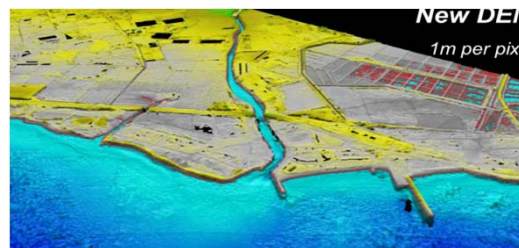
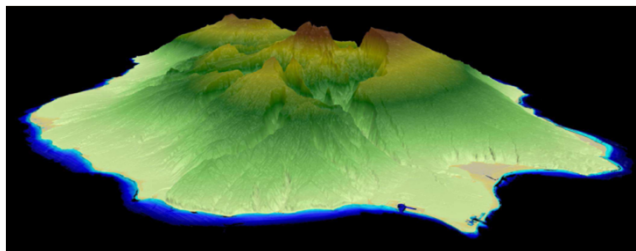
> To meet the *constraints of reliability, ease of implementation and time*, a semi-quantitative method is proposed to carry out the hazard map for coastal inundation in Reunion island as part of the Coastal Risks Prevention Plans.

> **Method :**

- *Outputs of existing models and parametric formulas to calculate Extreme Sea Level and Wave Run-up*
- *GIS Hazard Mapping using Lidar DEM and including expert feedback*



*Hazard Mapping*



New DEM  
1m per pixel

Lidar DEM  
(IGN-SHOM)

