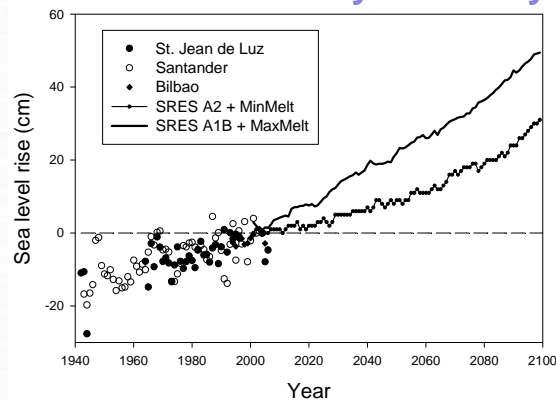


Aim:

- 1) To estimate the expected erosion of sandy beaches and dunes of the Basque coast (Spain) induced by an 0.5 m sea level rise expected for the area by 2100.
- 2) To assess the loss on floristic species richness of these coastal sandy habitats as a consequence of the expected erosion.

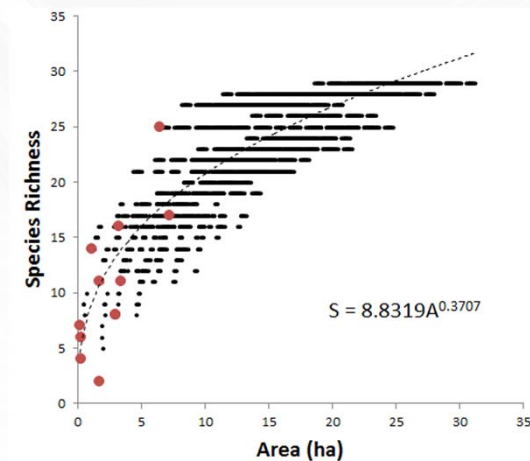
1. Sea level rise in the Bay of Biscay



2. Retreat on sandy beaches and vegetated dunes



3. Estimation of species regional pool



Conclusions

- The width of beaches will be reduced by the expected sea level rise at the end of the 21st Century (mean retreat of beach width = 34%, maximum = 100%, minimum = 5%).
- An overall (Basque coastal level) reduction of vegetated dune area higher than ~60% might cause dramatic losses on vegetation richness and an increase of species vulnerability.